



# Stelflow

INSTALLATION MANUAL  
ISSUE 2014-V1

FOR MORE INFORMATION GO TO:  
**WWW.RMCYLINDERS.COM**



**STELFLOW**

## INTRODUCTION

The corrosion resistant Stelflow Unvented cylinder is made from Duplex Stainless Steel. It is highly insulated with environmentally friendly foam enclosed in a rust resistant white steel case.

It is available in Direct, and Indirect versions in a family of 7 sizes from 90 - 300 litres in Twin Coil and Indirect. Direct Eco units are available in 5 sizes from 150 - 300 litres. There is also a range of slimstyle units from 60 - 210 litres again in Direct and Indirect versions.

To help ensure compliance with the relevant Water and Building Regulations all Stelflow units are supplied complete with the necessary safety and control devices needed to connect to the cold water mains. In order to ensure high flowrate performance with minimum pressure drop even in lower pressure areas, pre-set high quality controls have been selected.

Stelflow is approved to demonstrate compliance with Water Regulations and Building Regulations G3 & Part L.

## STORAGE PRIOR TO INSTALLATION

Stelflow should be stored upright in a dry area and kept in its original packaging until immediately prior to installation.

## INSTALLATION PREREQUISITES

This Cylinder should only be installed by a competent installer holding their G3 unvented qualification. The installation of this product is also notifiable under the national Building Regulations.

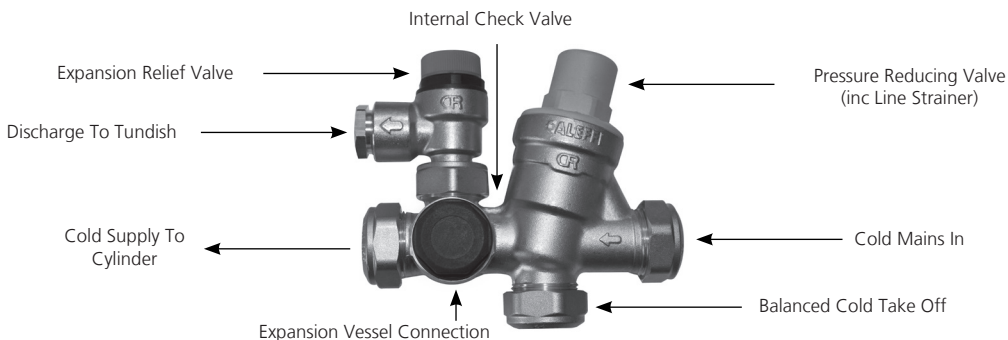
**ONCE COMPLETED THIS INSTRUCTION MANUAL IN ITS ENTIRETY SHOULD BE LEFT WITH THE HOME OWNER.**

## WHAT IS BENCHMARK?

Benchmark places responsibilities on both manufacturers and installers. The purpose is to ensure that customers are provided with the correct equipment for their needs, that it is installed, commissioned and serviced in accordance with the manufacturer's instructions by competent persons and that it meets the requirements of the appropriate Building Regulations. The Benchmark Checklist can be used to demonstrate compliance with Building Regulations and should be provided to the customer for future reference.

Installers are required to carry out installation, commissioning and servicing work in accordance with the Benchmark Code of Practice which is available from the Heating and Hotwater Industry Council who manage and promote the scheme. Visit [www.centralheating.co.uk](http://www.centralheating.co.uk)

## COLD INLET SET - WHAT ARE THE CONNECTIONS?



## EQUIPMENT SUPPLIED WITH THE CYLINDER

Cold Water Inlet Set	<b>LOOSE</b>
15 x 22mm Tundish	<b>LOOSE</b>
Temperature & Pressure Relief Valve	<b>FITTED</b>
Expansion Vessel	<b>LOOSE</b>
Expansion Vessel Bracket	<b>LOOSE</b>
Compression Nut Connection For Expansion Vessel	<b>LOOSE</b>
Immersion Heater(s) - Dependant on size & configuration	<b>LOOSE</b>
Instructional Manual	<b>LOOSE</b>
Benchmark Log Book - Found at the rear of this manual	<b>LOOSE</b>

## WATER SUPPLY

Stelflow is capable of delivering over 50 litres per minute when connected to a suitable mains supply. The high quality inlet control set with its 3 bar operating pressure has been designed to make the most of what is available however the performance of any unvented system is only as good as the water supply.

In unvented systems both hot and cold services are supplied simultaneously from the mains so the maximum possible on-site water demand must be assessed and the water supply should be tested to ensure it can meet these requirements. If necessary consult the local water supplier regarding the likely pressure and flow rate availability.

It is important that site pressure readings are taken under dynamic flow conditions, high pressures under zero flow conditions are not necessarily indicative of satisfactory performance. A minimum of 1.5 bar at 20 l/m flow should be available. Where mains inlet pressures are likely to exceed 16 bar then an additional upstream pressure reducing device should be fitted.

A minimum of 22mm supply pipe-work should ideally be provided and existing 1/2" (15mm) cold mains pipe-work may need to be upgraded. Hard water treatment should be considered in areas where content is greater than 200ppm, if required adjust cylinder temperature to below 60 degrees.

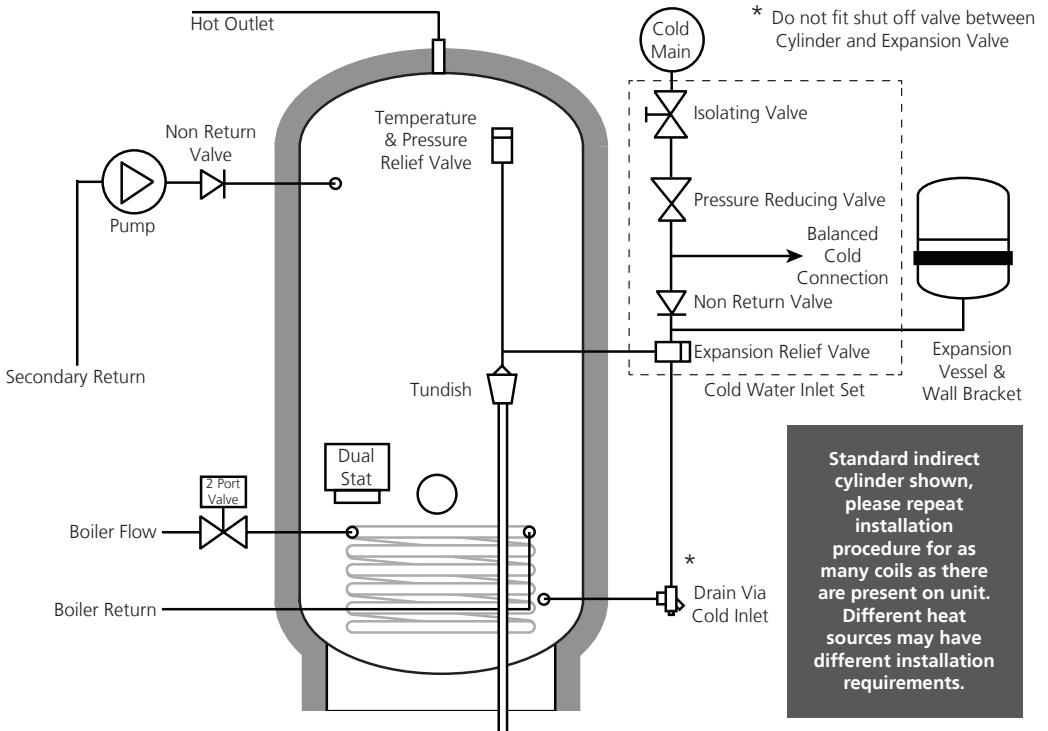
## SITING THE UNIT

Stelflow can be positioned more or less anywhere in the dwelling but it should be remembered that for every 1 metre that an outlet is above the Stelflow, the pressure will be reduced by 0.1 bar. If siting outside the heated envelope of the dwelling such as in a garage or outbuilding then frost protection should be provided and exposed pipework should be insulated.

Stelflow must be supported on a flat base capable of supporting the weight of the cylinder when full. The minimum recommended cupboard size is 650mm square.

It's important that consideration is given to access for maintenance of the valves. The immersion heaters are 375 mm long and access space should be provided for possible future replacement, also adequate access to remove and re-install the cylinder in the event of a problem.

## SCHEMATIC



## GENERAL INSTALLATION

### COLD MAINS PIPEWORK AND EXPANSION VESSEL

Run the cold main through the building to the place where the Stelflow is to be installed. Take care not to run the cold pipe near hot water or heating pipe work so that the heat pick up is minimised. Identify the cold water supply pipe and fit an isolating valve (not supplied).

A 22mm BS1010 stopcock can typically be used but a 22mm quarter turn full bore valve would be better as it does not restrict the flow as much. Do not use "screwdriver slot" or similar valves.

Make the connection to the cold feed of the cylinder and incorporate a drain valve. Position the inlet control just ABOVE the Temperature & Pressure Relief Valve (TPRV) mounted on the side of the cylinder. This ensures that the cylinder does not have to be drained down in order to service the inlet control set. Ensure that the arrow points in the direction of the water flow. Select a suitable position for the expansion vessel. Mount it to the wall using the bracket provided. Use the compression connection supplied to connect the vessel into the cold water pipe adjacent to the cold feed point on the cylinder. There must be no obstruction or flow restriction between the cylinder and the expansion vessel.

### BALANCED COLD CONNECTION

If there are to be showers, bidets or monobloc taps in the installation then a balanced cold supply is necessary. There is a 22mm balanced connection on the inlet control set. All outlets in the house will be at 3 bar and thus automatically balanced.

### HOT WATER PIPEWORK

Run the first part of the hot water distribution pipework in 22mm. This can be reduced to 15mm and 10mm as appropriate for the type of tap etc. Your aim should be to reduce the volume of the hot draw off pipework to a practical minimum so that the time taken for the hot water is as quick as possible.

Do not use monobloc mixer tap or showers if the balanced cold connection is not provided, the unit will back pressurise and result in discharge. Ensure that the top of the vessel is accessible for servicing.

### PRIMARY COIL CONNECTIONS (INDIRECT ONLY)

Compression connections are provided for the primary circuit which must be positively pumped. Primary flow and return connections are interchangeable to suit site conditions without affecting reheat times. These connections are metric and should be changed by the installer if using Irish size copper tube.

Sealed or vented primary circuits can be used, to comply with normal installation practice the primary pressure should not exceed 3 bar although the coil in Stelflow is suitable for up to 7 bar if required. The boiler may be Gas, Electric, Oil etc but must be under effective thermostatic control. Uncontrolled heat sources such as some AGA's, back boilers, solid fuel stoves, etc may not be suitable please contact us for guidance. The two port zone valve should be installed into the primary flow pipework leading to the coil flow inlet. The direction of flow arrow should be towards the primary flow connection. On twin coil cylinders an extra thermostat boss is provided.

### SECONDARY CIRCULATION

Where secondary circulation is required a circulator suitable for potable water should be used in conjunction with a non return valve to prevent backflow. It may be necessary to incorporate an extra expansion vessel into the circuit to accommodate the increased system water volume in larger secondary circulation systems. Where off peak electrical tariffs are being used then secondary circulation should be avoided. A secondary return boss is fitted as standard on 210, 250 & 300L. On smaller sizes tee into the cold feed pipe above the drain.

### IMMERSION HEATERS

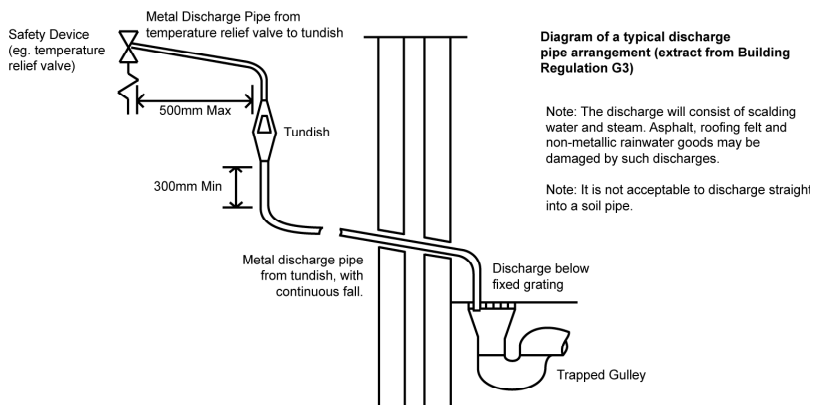
As a requirement of Building Regulations the Stelflow immersion heaters are fitted with thermal cut-out in addition to the normal control thermostat. To help ensure correct replacement the immersion heaters have a special 13/4" thread. They are of a low noise Incoloy construction and rated at 3 kW at 240 V. Replacement immersion heaters should be purchased via ourselves otherwise your guarantee may be affected. For commercial / heavy duty installations where constant usage / reheat is required Titanium immersion heaters must be fitted in order to comply with the warranty.

The 'O'ring on the head of the immersion heater should be correctly positioned and lubricated before fitting. Screw in hand-tight until almost sealed then gently tighten as the 'O' rings will seal easily. The electrical supply to each immersion heater/s must be fused at 13A via a double pole isolating switch to BS 3456. The cable must be 2.5mm<sup>2</sup> heat resistant (85°C HOFRR) sheathed flex complying to BS 6141:1981 Table 8. Do not operate the immersion heater/s until the unit is full of water. If any sterilisation liquid is in the cylinder do not operate the immersion heater/s as this will cause premature failure. Electric to be supplied by a fused supply compliant with local regulations, and fitted by a qualified Part P Electrician.

## ENERGY CUT OUT AND CYLINDER THERMOSTAT (INDIRECT ONLY)

As a requirement of Building Regulations the Stelflow units are fitted with a thermal cut-out in addition to the normal control thermostat. This unit should be fitted to the dedicated boss on the cylinder and wired to the two port valve controlling the primary flow.(see wiring diagram).

## DISCHARGE ARRANGEMENT



This guidance is available as a free of charge download of the G3 Approved Document from [www.planningportal.gov.uk](http://www.planningportal.gov.uk). The discharge from both the temperature relief and expansion relief valves can be joined together via a 15mm end feed tee.

It is important that any discharge water does not collect in this pipe-work and can run freely to the tundish. The tundish should be mounted in a vertical and visible position located in the same space as the unvented hot water storage system and be fitted as close as possible and within 500mm of the safety device e.g. the temperature relief valve. The discharge pipe-work from the tundish must be routed in accordance with Part G3 of the Building Regulations.

The discharge pipe from the tundish should terminate in a safe place where there is no risk to persons in the vicinity of the discharge, be of metal and:

- Be at least one pipe size larger than the nominal outlet size of the safety device unless its total equivalent hydraulic resistance exceeds that of a straight pipe 9m long i.e. discharge pipes between 9m and 18m equivalent resistance length should be at least two sizes larger than the nominal outlet size of the safety device, between 18 and 27m at least 3 sizes larger, and so on. Bends must be taken into account in calculating the flow resistance. An alternative approach for sizing discharge pipes would be to follow BS6700 Specification for design installation, testing and maintenance of services supplying water for domestic use within buildings and their curtilages.
- Have a vertical section of pipe at least 300mm long, below the tundish before any elbows or bends in the pipework.
- Be installed with a continuous fall.
- It is preferable for the discharge to be visible at both the tundish and the final point of discharge but where this is not possible or practically difficult there should be clear visibility at one or other of these locations.

Examples of acceptable discharge arrangements are:

1. Ideally below the fixed grating and above the water seal in a trapped gully.
2. Downward discharges at a low level; i.e. up to 100mm above external surfaces such as car parks, hard standings, grassed areas etc. are acceptable providing that where children play or otherwise come into contact with discharges, a wire cage or similar guard is positioned to prevent contact whilst maintaining visibility.
3. Discharges at a high level; e.g. in to metal hopper and metal down pipe with the end of the discharge pipe clearly visible (tundish visible or not) or onto a roof capable of withstanding high temperature discharges of water and 3m from any plastic guttering systems that would collect such discharges (tundish available).
4. Where a single pipe serves a number of discharges, such as in blocks of flats, the number served should be limited to not more than 6 systems so that any installation can be traced reasonably easily. The single common discharge pipe should be at least one pipe size larger than the largest individual discharge pipe to be connected. If unvented hot water storage systems are installed where discharges from safety devices may not be apparent i.e. in dwellings occupied by blind, infirm or disabled people, consideration should be given to the installation of an electronically operated device to warn when discharge takes place.

**ANY QUERIES WITH REGARD TO DISCHARGE ARRANGEMENT CONTACT YOUR LOCAL COUNCIL PLANNING OFFICE.**

## TWIN COIL FORMAT

Indirect twin coil units can be installed in two separate formats:

- In a solar powered system with a backup boiler.
- In a system with two non-solar heat sources (normally two boilers).

With either format it is essential that the installation meets all current regulations including, in particular, the high limit cut out requirements of Building Regulation G3.

## UPPER COIL

This is connected to the boiler as per the instructions for a Stelflow single coil cylinder with the high limit thermostat inserted into the middle thermostat pocket and wired to control the supplied two port valve in either the primary flow or return as indicated in the wiring instructions.

## LOWER COIL - SOLAR VARIENT

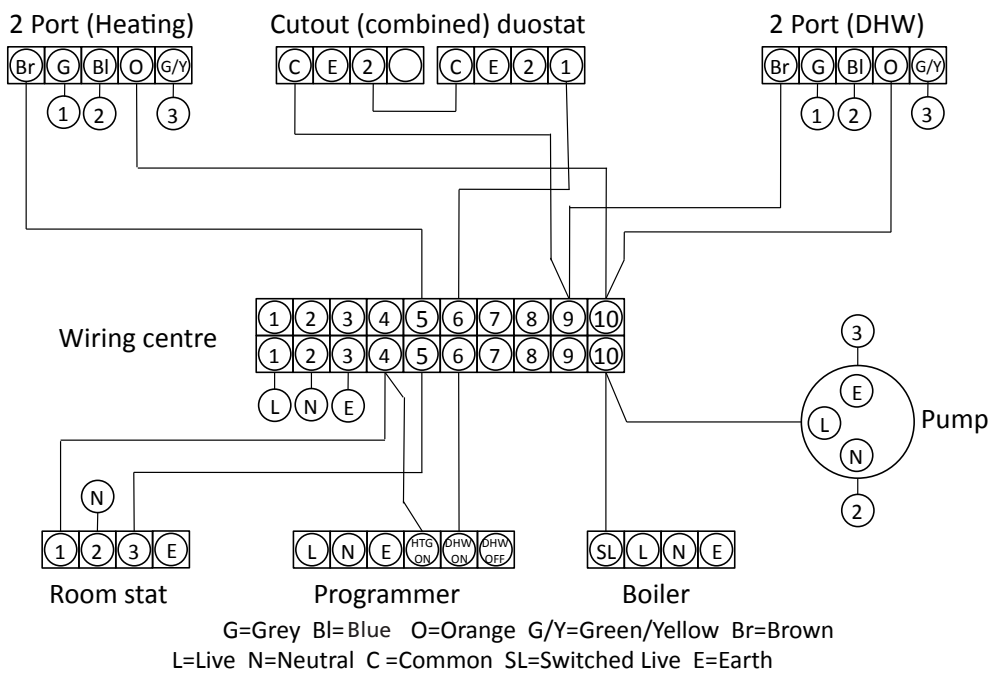
In a solar system the lower coil is connected to the solar heat source. Either primary coil connection may be used for flow or return. The solar cylinder sensor supplied is inserted into the lower thermostat pocket and the energy cut out into the upper pocket. The 'mechanical' control thermostat is not normally utilised in a solar system. In systems where the panels are above the cylinder then the energy cut out shall be wired so as to interrupt the power supply to the solar pump or controller in the event of over temperature.

In systems where the cylinder is above the panels then the energy cut out should be wired to a suitable two port valve (not supplied) on the return pipe-work to the solar panel.

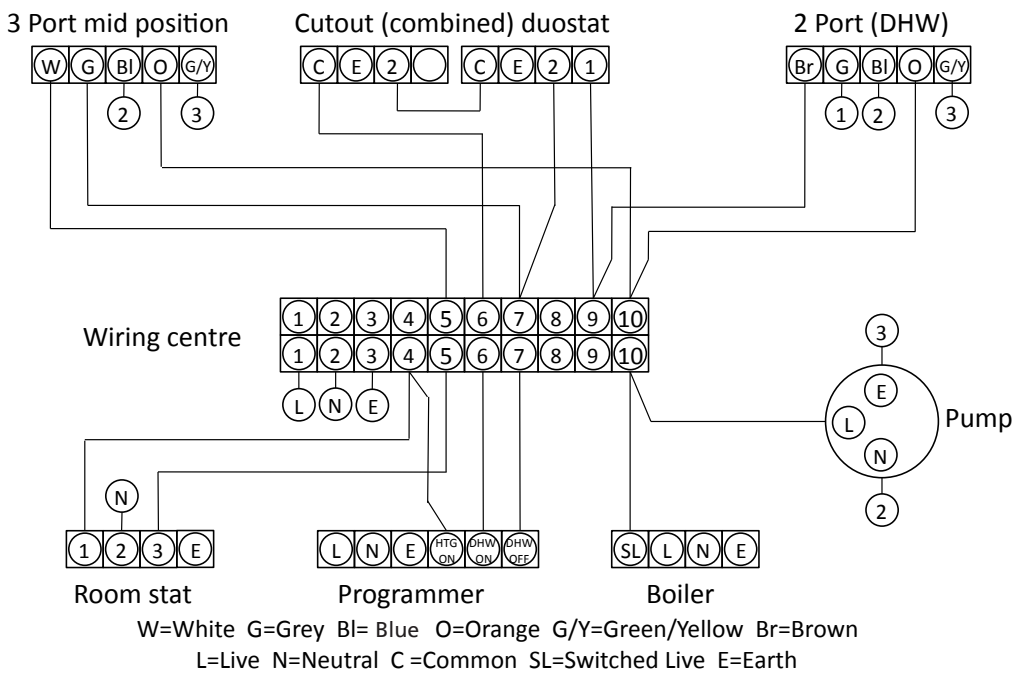
## LOWER COIL - NON SOLAR VARIENT

This is connected to the additional boiler as per the instructions for a **Stelflow** single coil cylinder with the high limit thermostat inserted into the lower thermostat pocket and wired to control the supplied two port valve in either the primary flow or return.

## WIRING DIAGRAM 2 x 2 Port zone valves (Typically Honeywell "S" Plan)



## WIRING DIAGRAM 3 Port + 2 Port (Typically Honeywell "Y" Plan)



## COMMISSIONING SERVICING

### FILLING

Check all connections for water tightness including any factory made connections such as the temperature and pressure relief valve. The pressure in the expansion vessel should be checked to ensure it is 3 bar (45PSI). The valve is of the car tyre (Schrader) type.

The hot tap furthest away from the Stelflow should be opened before filling the system to let air out.

The system should be flushed before use. The remaining taps should be opened in turn to expel air.

### DIRECT UNITS

The system must be fully filled and flushed before switching on the power to the immersion heaters and allowing the unit to heat up. The immersion heater is supplied preset at 55°C. Turning fully to + sets to approx 65°C.

### INDIRECT UNITS

Ensure the lever on the two port valve is set to the filling position and use the boiler manufacturers commissioning instructions to fill the primary circuit. When full release the lever. Switch the programmer to Domestic Hot water (DHW) and allow the unit to start to heat. Adjust the dial of the dual thermostat to between 55°C and 65°C as required.

### STORAGE TEMPERATURE

A storage temperature of 60-65°C is normal for both direct and indirect **Stelflow**. In hard water areas consideration should be given to reducing this to 55-60°C. In many healthcare applications the guidance on Legionella control and safe water delivery temperatures will require storing the water at 60-65°C, distributing at 50-55°C and using thermostatic mixing valves to control the final temperature. For details consult the NHS estates guidance on safe hot water temperatures.

### SAFETY VALVE CHECKS

Any water coming from either the expansion relief valve or the temperature / pressure relief valve during heat up is indicative of a problem which needs to be identified and rectified. The temperature relief and expansion relief valves should be fully opened, one at a time then both together allowing as much water as possible to flow through the tundish. Check that your discharge pipework is free from debris and is carrying the water away without spillage over the tundish and release the valves and check that they re-seat properly.

### GENERAL

Servicing should only be carried out by competent installers and any spare parts used must be purchased from RM Cylinders. NEVER bypass any safety devices or operate the unit without them fully operational.

### DRAINING

Isolate from the electrical supply to prevent the immersion heaters burning out. Isolate the unit from the cold mains. Attach a hose to the draining tap ensuring it reaches to a level below the unit (This will ensure an efficient syphon is set up and the maximum amount of water is drained from the unit). Open the hot tap closest to the unit and open the draining tap.

**WARNING: WATER DRAINED OFF MAY BE VERY HOT!**

### ANNUAL SERVICING

A competent installer should carry out the following checks on an annual basis, ideally at the same time as the annual boiler service.

1. The expansion relief valve on the inlet control set should be eased open allowing water to flow for 5 seconds. The valve should then be closed making sure it resets correctly. Repeat this procedure with the pressure / temperature relief valve. Always insure that the discharge pipework is allowing the water to drain away adequately. If not check for blockages etc. and clear.

**WARNING: THE WATER DISCHARGED MAY BE VERY HOT!**

2. Ensure that any immersion heaters that are fitted are working correctly and that they are controlling the water at a temperature of between 55°C and 65°C.
3. Make sure the pressure in the expansion vessel is charged to 3 bar. Turn off the water supply to the unit and open a hot tap first. The valve on the expansion vessel is a Schrader (standard car tyre) type. Air or CO2 can be used to repressurise the expansion vessel.
4. Remove the head on the inlet control set by unscrewing, and clean the mesh filter within.
5. The benchmark service record supplied within this manual should be updated at each service.

**YOUR GUARANTEE MAY BE VOID WITHOUT PROOF OF ANNUAL SERVICING. THE COMMISSIONING CERTIFICATE SUPPLIED AT THE REAR OF THIS MANUAL SHOULD ALSO BE COMPLETED BY THE INSTALLER.**



## GUARANTEE

The Stelflow stainless steel vessel carries a 25 year guarantee against faulty materials or manufacture provided that:

- It has been correctly installed as per this document and all the relevant standards, regulations and codes of practice in force at the time.
- It has not been modified in any way, other than by RM Cylinders.
- It has not been misused, tampered with or subjected to neglect.
- It has only been used for the storage of potable water.
- It has not been subjected to frost damage.
- The unit has been serviced annually.
- The benchmark service record has been filled in after each annual service.
- The guarantee period starts from the date of purchase and no registration is required.
- The extended guarantee is not transferable, and rests with the original householder.
- The system is fed from a public mains water supply.
- Store temperatures do not exceed 65oC.
- Installations are made only in the UK & Republic Of Ireland.
- The water supply does not have a Chloride content greater than 250ppm.
- Units are not installed with uncontrollable heat sources (E.g. Wood Burning Stoves).
- For commercial / heavy duty installations where constant usage / reheat is required Titanium immersion heaters must be fitted in order to comply with the warranty.

Please note that invoices for servicing may be requested to prove that the unit has been serviced annually. All the components fitted to / or supplied with the Stelflow carry a 2 year guarantee. The guarantee starts when the cylinder is first filled.

## EXCLUSIONS - THINGS THE GUARANTEE DOES NOT COVER

The effects of scale build up. Any labour charges associated with replacing the unit or its parts. Any consequential losses caused by the failure or malfunction of the unit.

## GUIDANCE IN THE EVENT OF A PROBLEM

If you have a problem in the first year contact the plumber who fitted the unit. Thereafter contact the plumber who carries out the annual servicing for you. If your Stelflow develops a leak we will supply you with a new one. We ask for an up-front payment to prevent fraud.

We will require the original unit to be returned to us for inspection along with a copy of your service record and commissioning checksheet. If it is confirmed that it has failed within the terms of the warranty your upfront payment will be refunded. If a component part fails within the two year guarantee period we will send you a new one again with an upfront charge. Credit card details may be taken to prevent fraud. We ask you to post the faulty part back to us within one month by recorded delivery. Once the part has been tested and proven faulty a refund will be issued.

## USER INSTRUCTIONS

Your stainless system is automatic in normal use and requires only annual servicing. You should employ an competent installer to perform the annual servicing. Normally this is timed to coincide with the annual boiler service.

### **IF WATER IS FLOWING FROM THE SAFETY VALVES THROUGH THE TUNDISH THIS INDICATES A FAULT CONDITION AND ACTION IS NEEDED.**

If this water is hot turn the boiler and / or the immersion heater off. Do not turn off the water until the discharge runs cool. The discharge may also stop.

### **CALL A COMPETENT PLUMBER OUT TO SERVICE THE UNIT.**

Tell them you have a fault on an unvented cylinder. We stock all the spare parts they may need.

## PLEASE NOTE

Before making any claim/return on a Stelflow Cylinder or Component, please make sure you have run through the following fault finding options and check the offending item is less than one year old or the unit has been serviced every 12 months in line with the Benchmark Scheme.

Proof of this will be required when returning any part, also note all components are date stamped. Failure to do this will result in any credit/claim being rejected.

# UNVENTED CYLINDER

## Fault Finding Information

Symptoms.	Possible Causes	Follow up action.
<b>Cylinder appears to leak from within the case.</b>	Loose cylinder connection.	Check all connection points including immersion heaters to ensure integrity of joint and remake any suspect joints.
<b>Expansion Valve operates and water is visible at the Tundish.</b>	Possible fault at Pressure Reducing Valve.	Follow fault finding information for Inlet Control Group.
	Back pressure from the system.	Check all mixer type outlets are served by a balanced cold service. Where not repipe or install bespoke pressure reducing valve to offending outlet.
<b>Expansion Valve operates when cylinder is heated.</b>	Possible fault at Expansion Vessel.	Follow fault finding information for Expansion Vessel.
<b>Noise when operating tap outlet.</b>	Insecure Pipework.	Increase the number of pipe clips.
<b>Reduced water flow.</b>	External works to public mains.	Wait for works to be completed.
	Debris from water mains.	Strip & clean or replace Inlet Control Group.
	Pressure Reducing Valve sticking.	Strip & clean or replace Inlet Control Group.
<b>No hot water available.</b>	Immersion heater failure.	Follow fault finding information for Immersion Heater
	Boiler failure.	Check operation of the boiler and its controls.

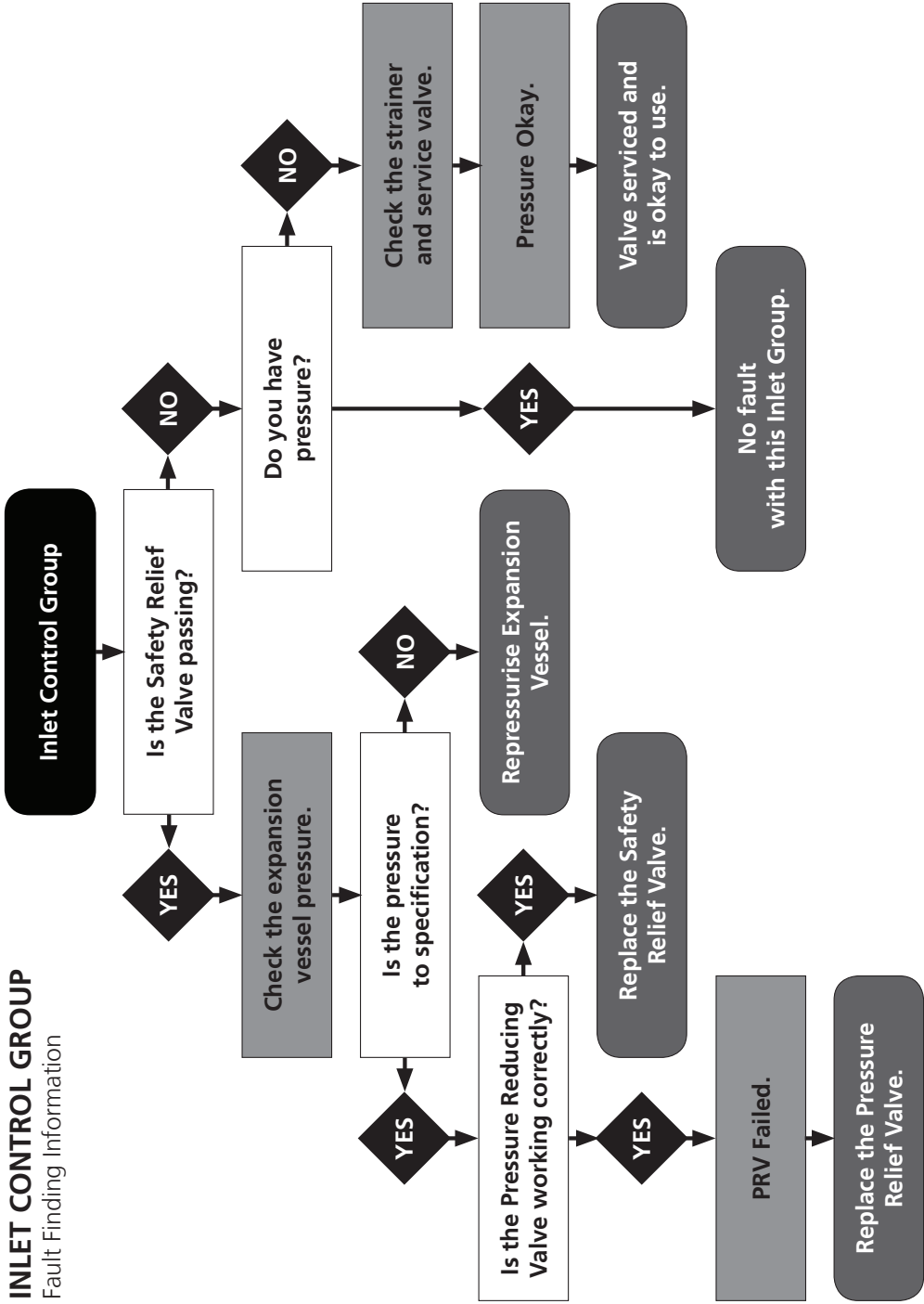
# EXPANSION VESSEL

## Fault Finding Information

Symptoms.	Possible Causes	Follow up action.
<b>Discharge of water from the Relief Valve.</b>	Expansion Vessel is too small.	Vessel needs resizing and installation by appropriately qualified engineers.
	Pre-charge set incorrectly on vessel installation.	Pre-charge requires setting while system is de-pressurised according to cylinder manufacturers recommendations.
	Membrane is ruptured and may require replacement.	Replace membrane or entire vessel. Inspect Shrader valve for leaks or damage.
	Membrane may be partially de-pressurised due to natural losses and require re-pressurisation.	Re-pressurise or consider replacement depending on age of vessel and amount of pressure lost. Inspect Shrader valve for leaks or damage.
<b>Leak from Flange or Water Connection.</b>	Failure of Flange Plate.	Replace Flange Plate or entire Vessel.
	Loss of torque in Flange retaining bolts.	Re-tighten bolts as needed.
	Ruptured membrane has caused corrosion of vessel body resulting in pinhole leak.	Entire Vessel must be replaced. Inspect Shrader valve for leaks or damage.
<b>Vessel appears to be fully of liquid when system is cold.</b>	Membrane is de-pressurised.	Replace membrane or entire vessel. Inspect Shrader valve for leaks or damage.
<b>Water is discharged from vessel when Shrader pin is de-pressed for inspection of air pressure.</b>	Membrane is ruptured.	Membrane or vessel requires replacement.

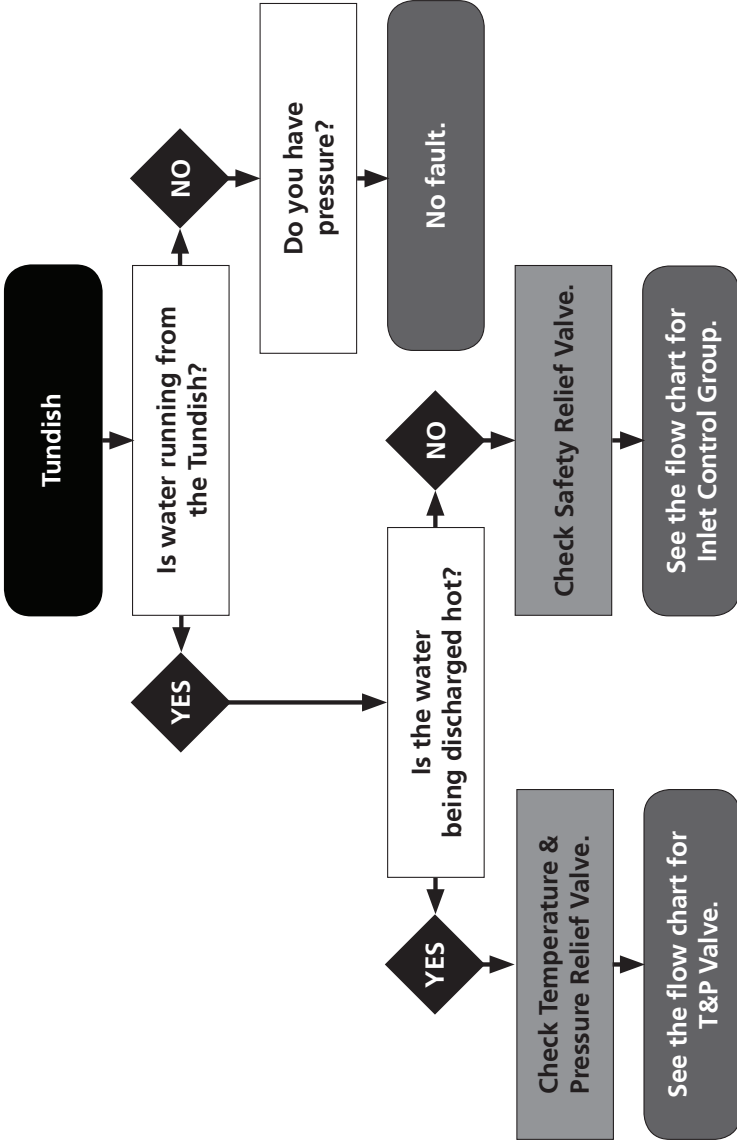
# INLET CONTROL GROUP

Fault Finding Information



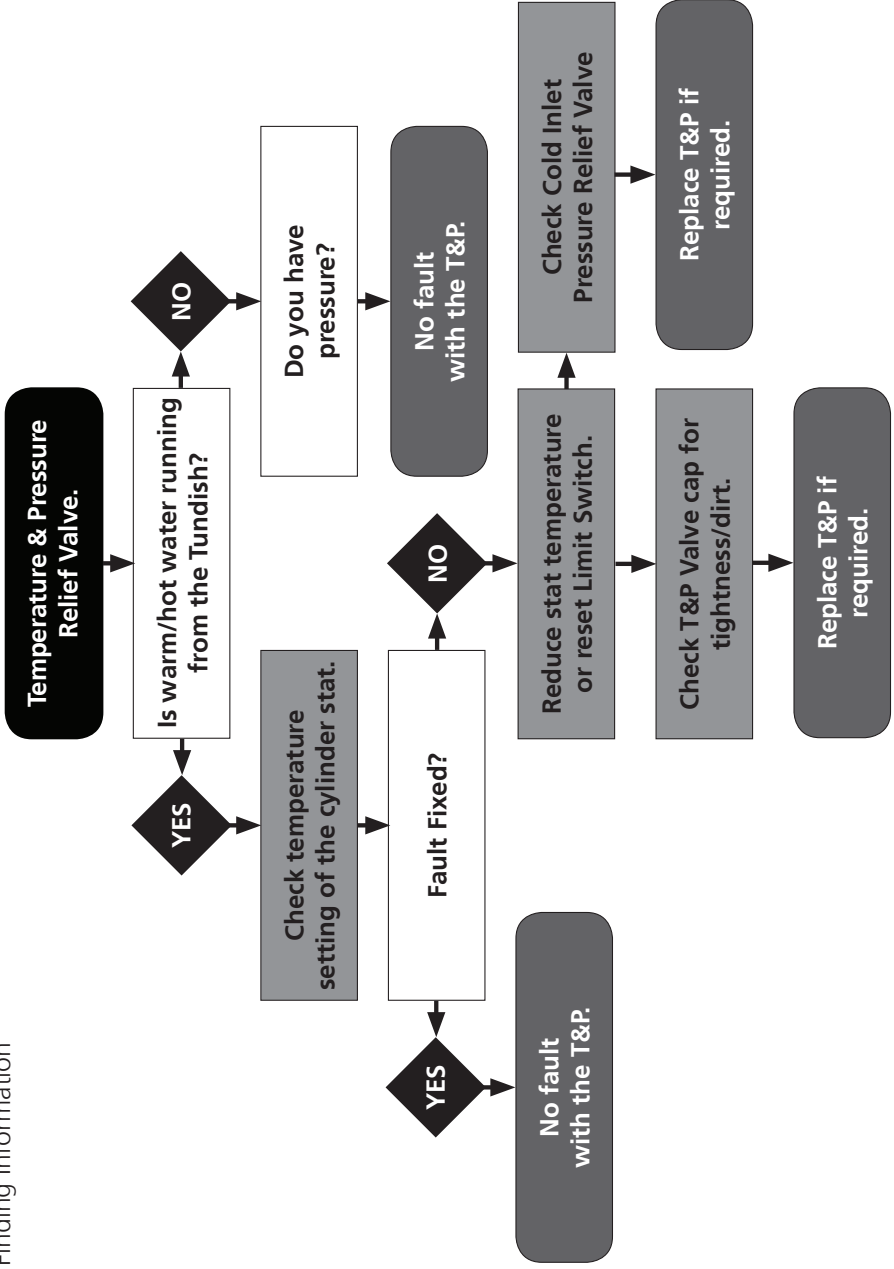
# TUNDISH

Fault Finding Information



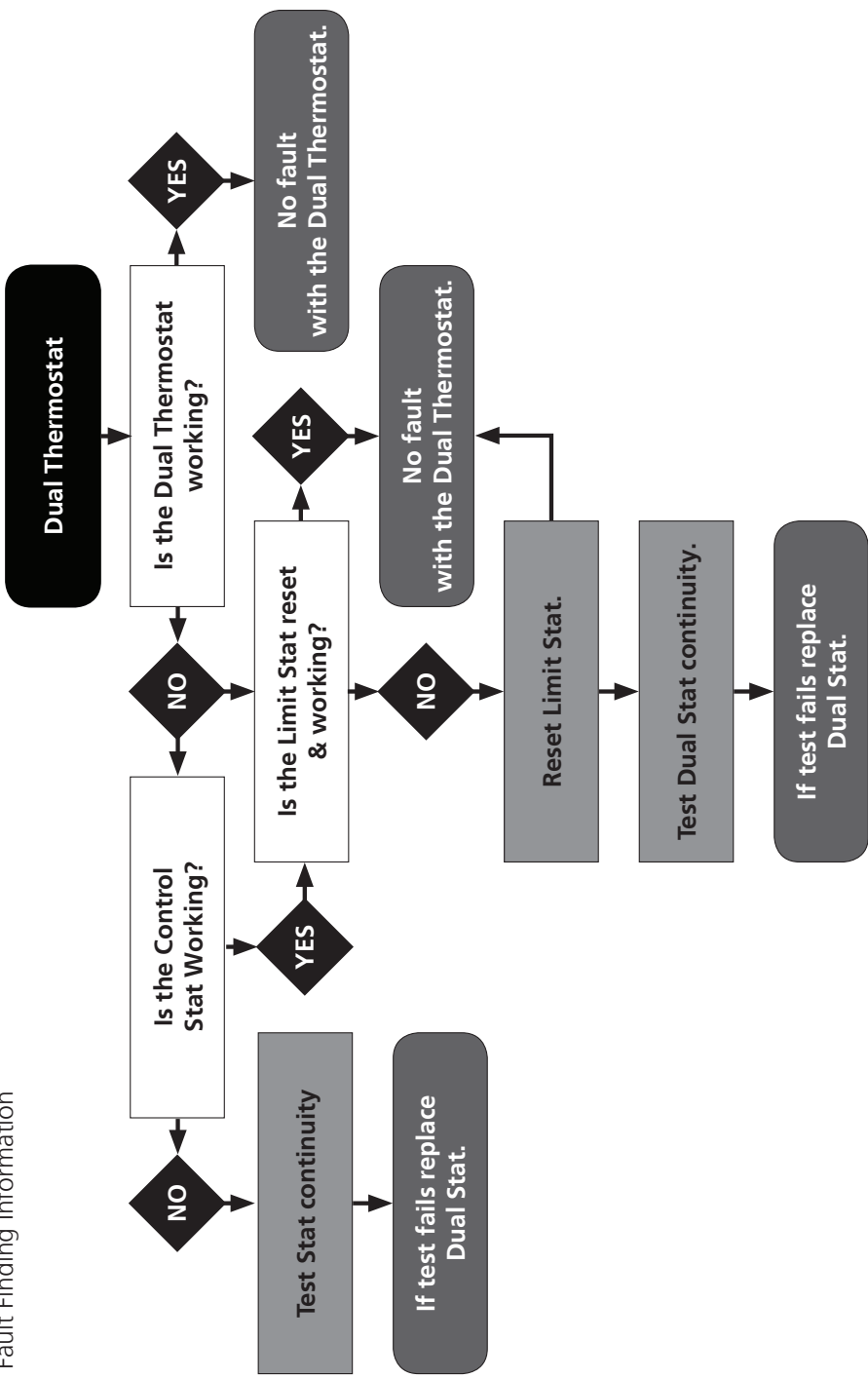
# T&P RELIEF VALVE

Fault Finding Information



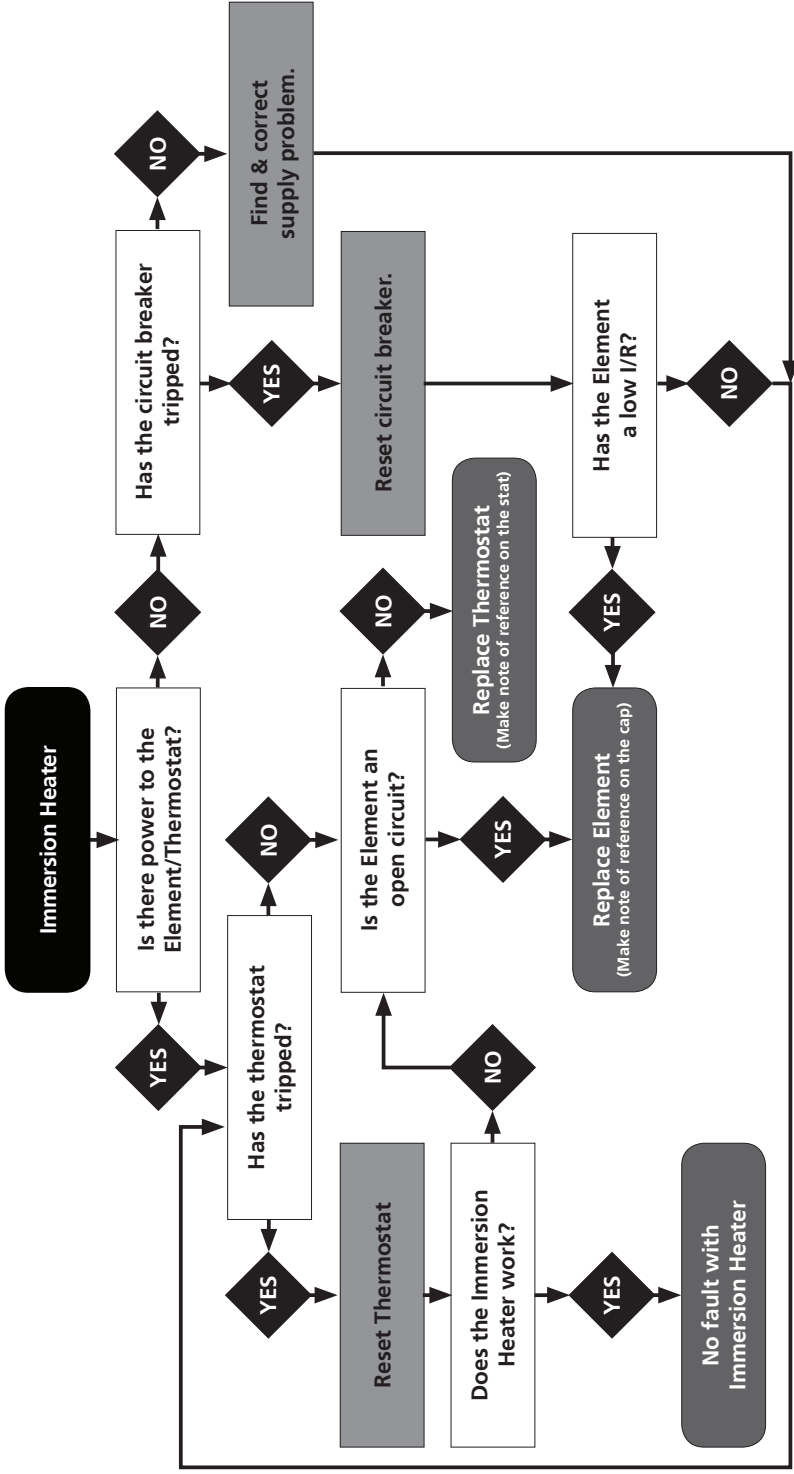
# DUAL THERMOSTAT

Fault Finding Information



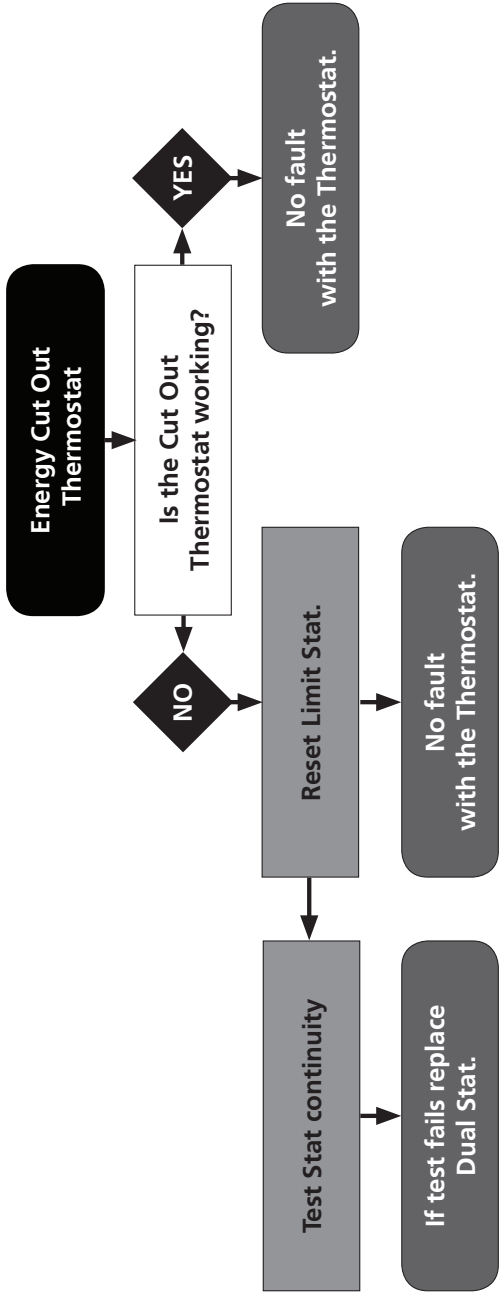
# IMMERSION HEATER

Fault Finding Information



# ENERGY CUT OUT

Fault Finding Information





# MAINS PRESSURE HOT WATER STORAGE SYSTEM COMMISSIONING CHECKLIST

This Commissioning Checklist is to be completed in full by the competent person who commissioned the storage system as a means of demonstrating compliance with the appropriate Building Regulations and then handed to the customer to keep for future reference.

Failure to install and commission this equipment to the manufacturer's instructions may invalidate the warranty but does not affect statutory rights.

Customer Name \_\_\_\_\_ Telephone Number \_\_\_\_\_  
 Address \_\_\_\_\_  
 Cylinder Make and Model \_\_\_\_\_  
 Cylinder Serial Number \_\_\_\_\_  
 Commissioned by (print name) \_\_\_\_\_ Registered Operative ID Number \_\_\_\_\_  
 Company Name \_\_\_\_\_ Telephone Number \_\_\_\_\_  
 Company Address \_\_\_\_\_ Commissioning Date \_\_\_\_\_

**To be completed by the customer on receipt of a Building Regulations Compliance Certificate\*:**

Building Regulation Notification Number (if applicable) \_\_\_\_\_

**ALL SYSTEMS PRIMARY SETTINGS** (indirect heating only)

Is the primary circuit a sealed or open vented system? Sealed  Open   
 What is the maximum primary flow temperature? \_\_\_\_\_ °C

**ALL SYSTEMS**

What is the incoming static cold water pressure at the inlet to the system? \_\_\_\_\_ bar  
 Has a strainer been cleaned of installation debris (if fitted)? Yes  No   
 Is the installation in a hard water area (above 200ppm)? Yes  No   
 If yes, has a water scale reducer been fitted? Yes  No   
 What type of scale reducer has been fitted? \_\_\_\_\_  
 What is the hot water thermostat set temperature? \_\_\_\_\_ °C  
 What is the maximum hot water flow rate at set thermostat temperature (measured at high flow outlet)? \_\_\_\_\_ l/min  
 Time and temperature controls have been fitted in compliance with Part L of the building Regulations? Yes   
 Type of control system (if applicable) Y Plan  S Plan  Other   
 Is the cylinder solar(or other renewable compatible)? Yes  No   
 What is the hot water temperature at the nearest outlet? \_\_\_\_\_ °C  
 All appropriate pipes have been insulated up to 1 meter or the point where they become concealed Yes

**UNVENTED SYSTEMS ONLY**

Where is the pressure reducing valve situated (if fitted)? \_\_\_\_\_  
 What is the pressure reducing valve setting? \_\_\_\_\_ bar  
 Has a combined temperature and pressure relief valve and expansion valve been fitted and discharge tested? Yes  No   
 The tundish and discharge pipework have been connected and terminated to Part G of the Building Regulations Yes   
 Are all energy sources fitted with a cut out device? Yes  No   
 Has the expansion vessel or internal air space been checked? Yes  No

**THERMAL STORES ONLY**

What store temperature is achievable? \_\_\_\_\_ °C  
 What is the maximum hot water temperature? \_\_\_\_\_ °C

**ALL INSTALLATIONS**

The hot water system complies with the appropriate Building Regulations Yes   
 The system has been installed and commissioned in accordance with the manufacturer's instructions Yes   
 The system controls have been demonstrated and understood by the customer Yes   
 The manufacturer's literature, including Benchmark Checklist and Service Record, has been explained and left with the customer Yes

Commissioning Engineer's Signature \_\_\_\_\_  
 Customer's Signature \_\_\_\_\_  
 (To confirm satisfactory demonstration and receipt of manufacturer's literature)

\*All installations in England and Wales must be notified to Local Authority Building Control (LABC) either directly or through a Competent Persons Scheme. A Building Regulations Compliance Certificate will then be issued to the customer.



# SERVICE RECORD

It is recommended that your hot water system is serviced regularly and that the appropriate Service Record is completed.

## Service Provider

Before completing the appropriate Service Record below, please ensure you have carried out the service as described in the manufacturer's instructions.

**SERVICE 1** Date \_\_\_\_\_  
Engineer Name \_\_\_\_\_  
Company Name \_\_\_\_\_  
Telephone Number \_\_\_\_\_  
Comments \_\_\_\_\_  
\_\_\_\_\_  
\_\_\_\_\_  
Signature \_\_\_\_\_

**SERVICE 2** Date \_\_\_\_\_  
Engineer Name \_\_\_\_\_  
Company Name \_\_\_\_\_  
Telephone Number \_\_\_\_\_  
Comments \_\_\_\_\_  
\_\_\_\_\_  
\_\_\_\_\_  
Signature \_\_\_\_\_

**SERVICE 3** Date \_\_\_\_\_  
Engineer Name \_\_\_\_\_  
Company Name \_\_\_\_\_  
Telephone Number \_\_\_\_\_  
Comments \_\_\_\_\_  
\_\_\_\_\_  
\_\_\_\_\_  
Signature \_\_\_\_\_

**SERVICE 4** Date \_\_\_\_\_  
Engineer Name \_\_\_\_\_  
Company Name \_\_\_\_\_  
Telephone Number \_\_\_\_\_  
Comments \_\_\_\_\_  
\_\_\_\_\_  
\_\_\_\_\_  
Signature \_\_\_\_\_

**SERVICE 5** Date \_\_\_\_\_  
Engineer Name \_\_\_\_\_  
Company Name \_\_\_\_\_  
Telephone Number \_\_\_\_\_  
Comments \_\_\_\_\_  
\_\_\_\_\_  
\_\_\_\_\_  
Signature \_\_\_\_\_

**SERVICE 6** Date \_\_\_\_\_  
Engineer Name \_\_\_\_\_  
Company Name \_\_\_\_\_  
Telephone Number \_\_\_\_\_  
Comments \_\_\_\_\_  
\_\_\_\_\_  
\_\_\_\_\_  
Signature \_\_\_\_\_

**SERVICE 7** Date \_\_\_\_\_  
Engineer Name \_\_\_\_\_  
Company Name \_\_\_\_\_  
Telephone Number \_\_\_\_\_  
Comments \_\_\_\_\_  
\_\_\_\_\_  
\_\_\_\_\_  
Signature \_\_\_\_\_

**SERVICE 8** Date \_\_\_\_\_  
Engineer Name \_\_\_\_\_  
Company Name \_\_\_\_\_  
Telephone Number \_\_\_\_\_  
Comments \_\_\_\_\_  
\_\_\_\_\_  
\_\_\_\_\_  
Signature \_\_\_\_\_

**SERVICE 9** Date \_\_\_\_\_  
Engineer Name \_\_\_\_\_  
Company Name \_\_\_\_\_  
Telephone Number \_\_\_\_\_  
Comments \_\_\_\_\_  
\_\_\_\_\_  
\_\_\_\_\_  
Signature \_\_\_\_\_

**SERVICE 10** Date \_\_\_\_\_  
Engineer Name \_\_\_\_\_  
Company Name \_\_\_\_\_  
Telephone Number \_\_\_\_\_  
Comments \_\_\_\_\_  
\_\_\_\_\_  
\_\_\_\_\_  
Signature \_\_\_\_\_



Essential Cylinder Information
Maximum water supply pressure - <b>16 Bar</b>
Immersed electric element rating - <b>3kW</b>
Operating pressure - <b>3 Bar</b>
Expansion vessel charge pressure - <b>3 Bar</b>
Expansion valve setting - <b>6 Bar</b>
Set opening pressure of combined T&P valve - <b>7 Bar</b>
Storage capacity - <b>See cylinder info table</b>
Mass of unit - <b>See cylinder data table</b>
Immersion heater length - <b>14"</b>
Maximum primary pressure (indirects only) - <b>3 Bar</b>

Standard Cylinder Data Table		Capacity (Litres)	Weight (Kg)(Empty)
Stelflow 90	Direct	90	21
	Indirect	88	23
Stelflow 120	Direct	120	26
	Indirect	118	30
Stelflow 150	Direct	150	33
	Indirect	148	38
	Direct Solar	148	38
	Solar Twin	147	40
Stelflow 180	Direct	180	38
	Indirect	178	42
	Direct Solar	178	42
	Solar Twin	177	45
Stelflow 210	Direct	210	41
	Indirect	208	45
	Direct Solar	208	45
	Solar Twin	207	48
Stelflow 250	Direct	250	46
	Indirect	248	51
	Direct Solar	248	51
	Solar Twin	247	53
Stelflow 300	Direct	300	55
	Indirect	298	60
	Direct Solar	298	60
	Solar Twin	297	63

Slimline Cylinder Data Table		Capacity (Litres)	Weight (Kg)(Empty)
Stelflow 60	Direct	60	21
	Indirect	58	23
Stelflow 90	Direct	120	25
	Indirect	118	27
Stelflow 120	Direct	150	31
	Indirect	148	36
Stelflow 150	Direct	180	39
	Indirect	178	45
	Direct Solar	178	47
	Solar Twin	177	49
Stelflow 180	Direct	210	45
	Indirect	208	50
	Direct Solar	208	53
	Solar Twin	207	55
Stelflow 210	Direct	250	48
	Indirect	248	53
	Direct Solar	248	55
	Solar Twin	247	58

### RM Cylinders

Unit 4 Gilcar Way Wakefield Europort Castleford WF10 5QS  
 Tel: **01924 224282** Fax: **01924 224283** Web: [www.rmcyinders.com](http://www.rmcyinders.com)